

OPERATING & INSTALLATION INSTRUCTIONS

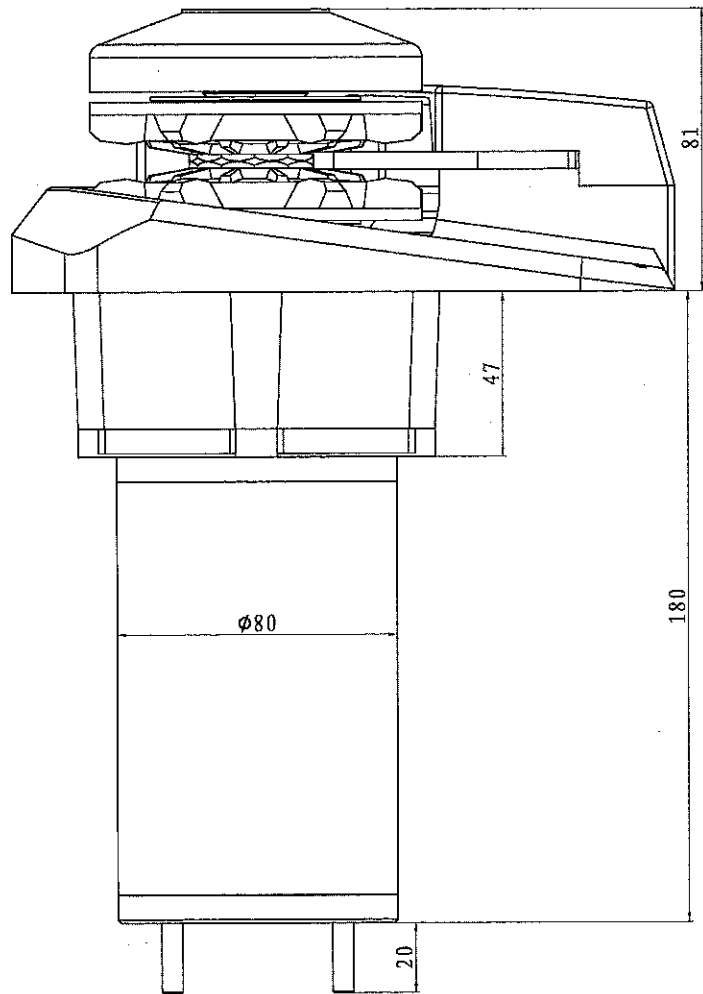


**CV612/CV912
WINDLASS**

TECHNICAL DATA

Model number	CV912	CV612
Motor (W)	900	600
Voltage (V)	12	12
Working Load (KGS)	80	50
Working Current (A)	80	60
Maximum Load (KGS)	220	150
Maximum Working Current (A)	200	160
Drop speed chain (m/min)	25	25
Alt.1-Chain (DIN 766)	6mm/7mm/8mm	6mm/7mm/8mm
Rope (mm)	12/14	12/14
Weight (KGS)	8.5	8.5

GENERAL ASSEMBLY



INSTALLATION

BEFORE USING THE WINDLASS READ THESE INSTRUCTIONS CAREFULLY. IF IN DOUBT, CONTACT YOUR NEAREST DEALER.

WARNING: the windlasses are designed to weigh the anchor. Do not use the equipment for other purposes. Our company shall not be held responsible for damage to equipment and/or personal injury, caused by a faulty use of the equipment. The windlass is not designed for the loads that might occur in extreme weather conditions (storms).

Always deactivate the windlass when not in use.

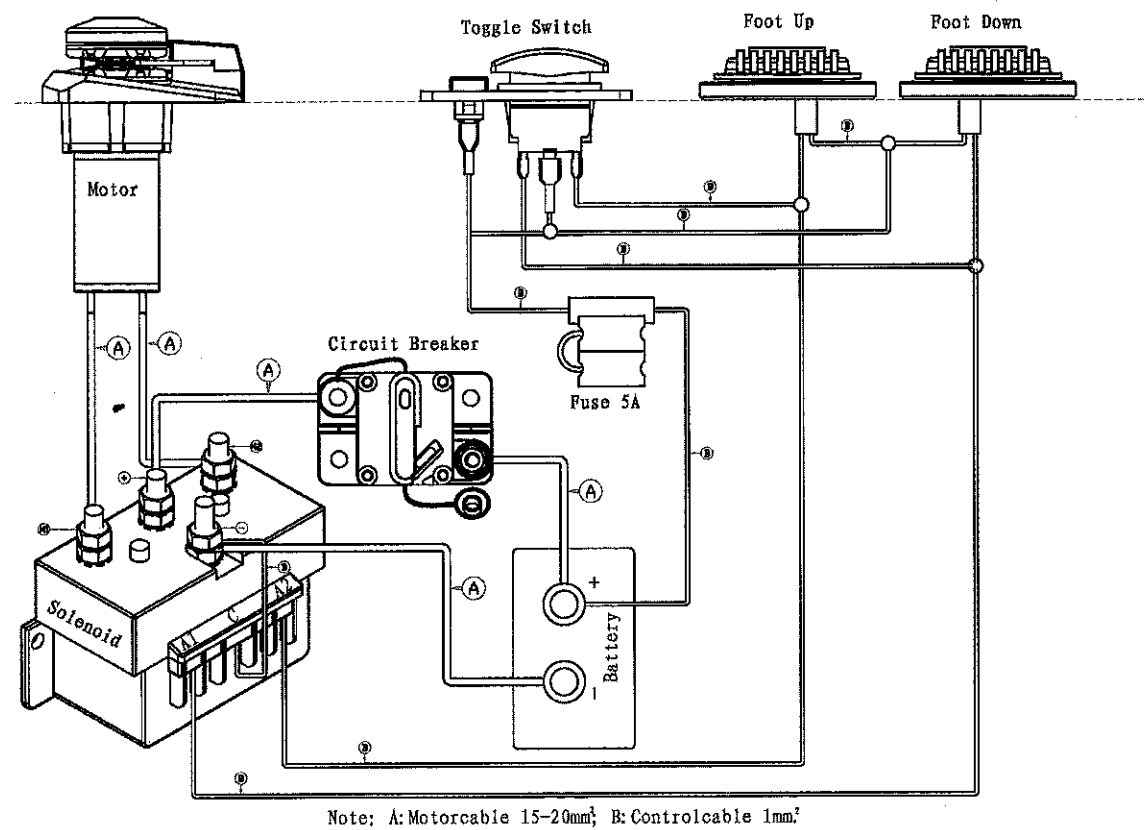
Check that there are no swimmers nearby before dropping anchor. For mixed rope-chain installation always use a three-strand rope and make an effective splice, seeking expert advice if necessary. The solenoid unit and electric device must be installed in a point protected from accidental water contact.

OUR ACCESSORIES RECOMMENDED: radio receiver transmitter - foot switch - waterproof switch - rocker switch - circuit breaker - solenoid.

INSTALLATION REQUIREMENTS: the windlass must be positioned with the gypsy aligned with the bow roller. Ensure that the upper and lower surfaces of the deck are as parallel as possible. If this is not the case, compensate the difference appropriately (a lack of parallelism could result in a loss of motor power). There must be no obstacles under deck to the passage of cables, rope and chain; lack of depth of the peak could cause jamming.

FITTING PROCEDURE: when the ideal position has been established, drill four holes using the drilling template provided. Remove excess material from the chain passage, refine and flatten with a specialized product (marine paint, gel coat or two pack epoxy) to assure free passage for both rope and chain. Place the upper part in position and connect it to the bottom part. Secure the windlass by using the studs and the screws supplied. Connect the supply cables from the windlass to the reversing solenoid unit.

CONNECTION DIAGRAM



USAGE

WARNING

WARNING: stay clear of the chains, rope and gypsy. Make sure the electric motor is off when windlass is used manually (even when using the handle for disengaging the clutch). In fact people with remote controls (remote control or control system via radio) might accidentally operate the windlass.

WARNING: secure the chain with a device before starting the navigation.

WARNING: do not operate the windlass by using the electrical power when the handle is inserted in the drum or into the gypsy cover.

WARNING: the company recommends using a circuit breaker designed for direct current (DC) with delayed-action to protect the motor supply line from overheating or short circuits. The circuit breaker can be used to cut off power to the windlass control circuit and so avoid accidental activation.

CLUTCH USE

The clutch provides a link between the gypsy and the main shaft. The clutch can be released (disengagement) by using the handle which, when inserted in the bush of the drum or in the gypsy cover, must be turned counter-clockwise. The clutch will be re-engaged by turning it clockwise (engagement).

WEIGHING THE ANCHOR

Turn on the engine. Make sure the clutch is engaged and remove the handle. Press the UP button on the control provided.

If the windlass stops and the circuit breaker has not tripped, wait a few seconds and try again (avoid keeping the button pressed).

If the circuit breaker has tripped, reset it and wait a few minutes before weighing anchor once again.

If, after a number of attempts, the windlass is still blocked, we suggest to move the boat to release the anchor. Check the upward movement of the chain for the last few meters in order to avoid damages to the bow.

CASTING THE ANCHOR

The anchor can be cast by using the electrical control or manually. To operate manually, the clutch must be disengaged allowing the gypsy to revolve and letting the rope or chain fall into the water. To slow down the chain, the handle must be turned clockwise.

To cast the anchor by using the electrical power, press the DOWN button on the control provided. In this manner, anchor casting is under control and the chain and rope unwind evenly.

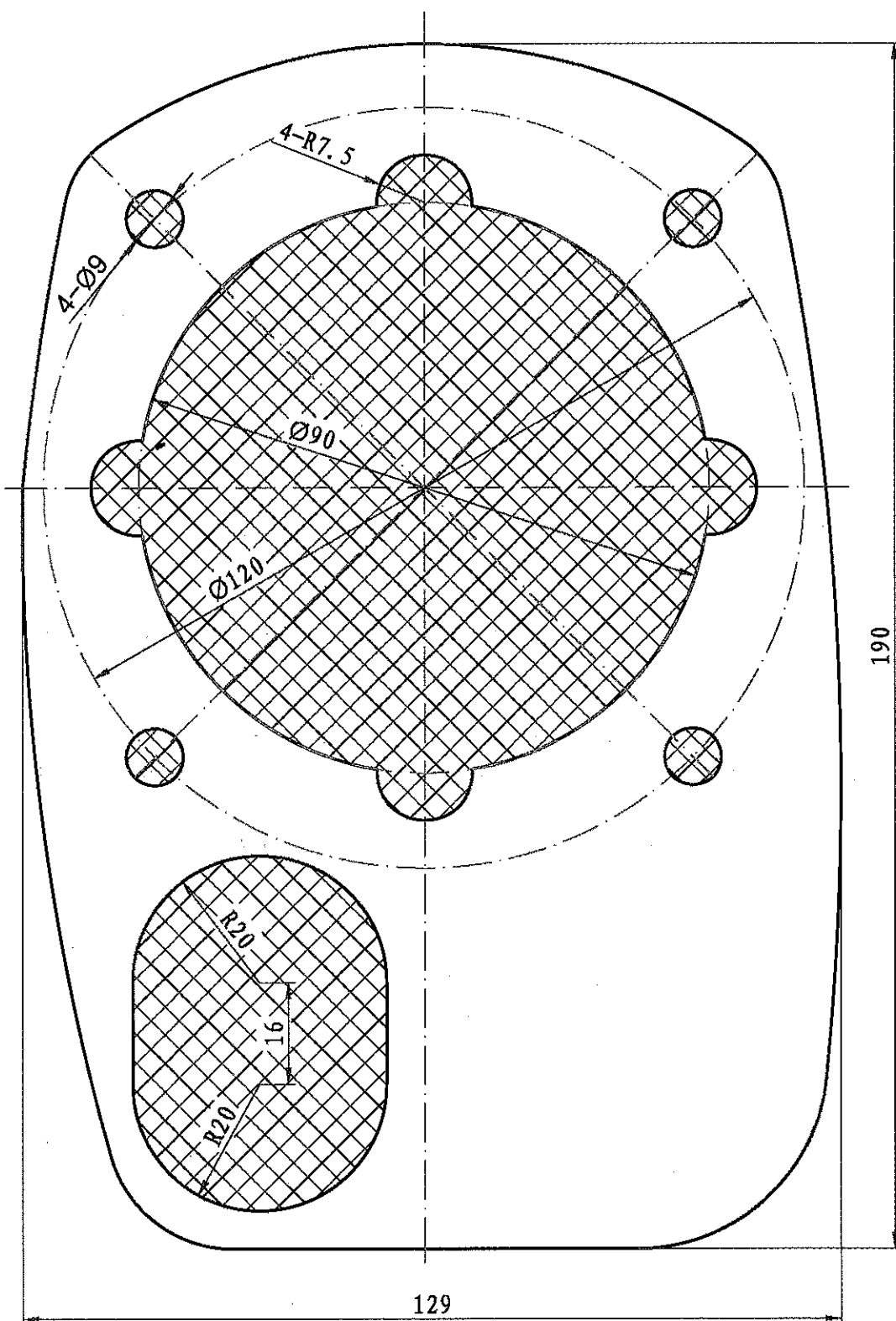
In order to avoid any stress on the windlass – once the boat is anchored – fasten the chain or secure it in place with a rope.

WARNING: make sure the electrical power to the motor is switched off when working manually on the windlass.

The windlasses are manufactured with materials resistant to marine environments.

In any case, any salt deposits on the outside must be removed periodically to avoid corrosion and damage to the equipment.

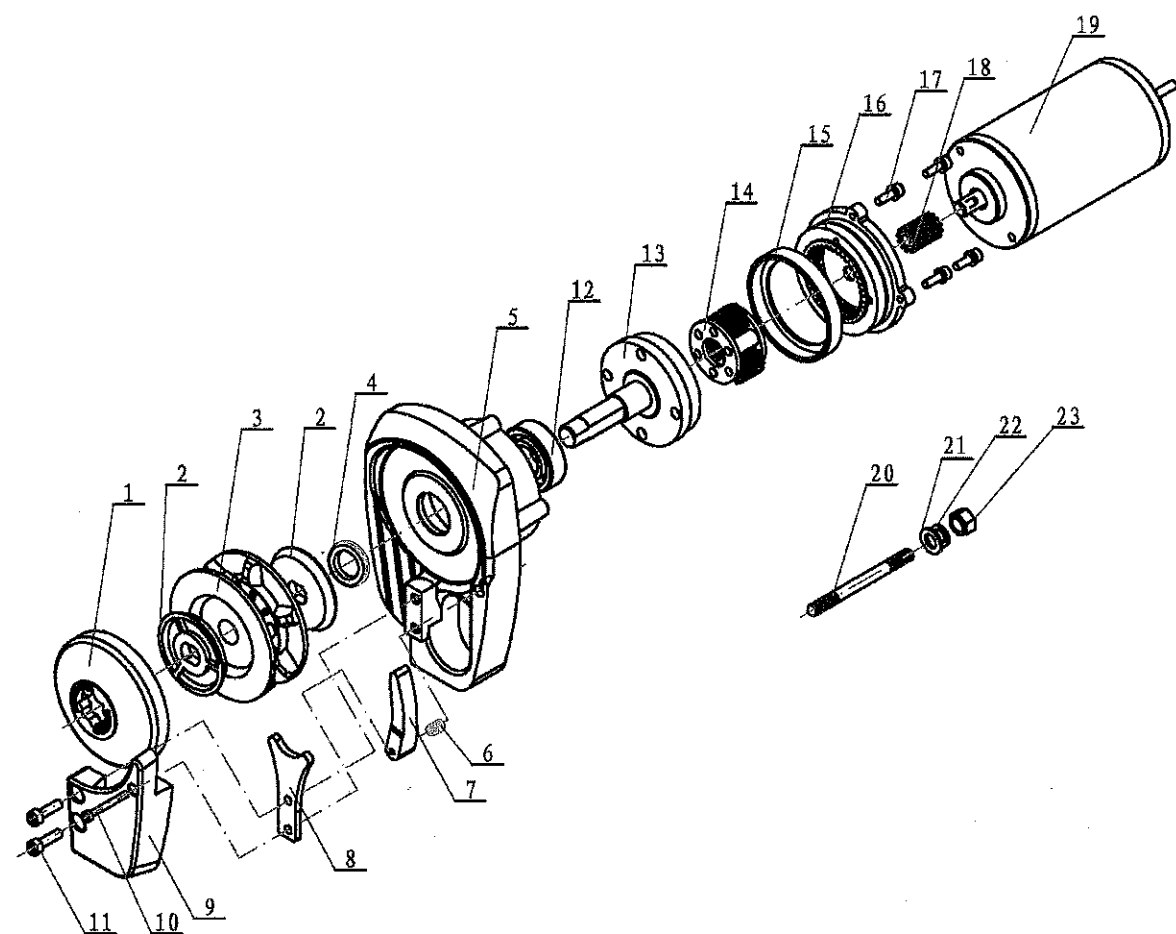
The parts where salt may have built up should be washed thoroughly with fresh water.



CV612/CV912 BASE PLATE (SCALE, 1: 1)

Chain/Rope out

MAINTENANCE



ITEM	DESCRIPTION	QTY	ITEM	DESCRIPTION	QTY
1	Gypsy cover	1	13	Shaft assembly	1
2	Clutch cone	2	14	Planet gear assembly	1
3	Drum	1	15	Bush	1
4	TC oil seal	1	16	Fixed gear	1
5	Base	1	17	Screw hex hd M5x20	4
6	Spring for pressure lever	1	18	Sun gear	1
7	Pressure lever	1	19	Motor	1
8	Chain guide	1	20	Screw two-hd M8x70	4
9	Chain guide cover	1	21	Washer plate D8	4
10	Screw hex hd M4x40	1	22	Washer spring D8	4
11	Screw hex hd M6x20	2	23	Nut M8	4
12	Bearing 6204	1			